



INDEPENDENT ULTRASOUND

# SP-900 & PB2020-M NEW ULTRASONIC

Fujifilm developed this very compact, user-friendly ultrasonic mini probe system to make it possible to approach a peripheral pulmonary lesion effectively. Offering enhanced operability, SP-900 and PB2020-M are designed for a more precise and efficient examination.



**Design Award Winner**  
SP-900 / CP-900 / RS-900



# PROBE SYSTEM

## CLEAR IMAGES

High resolution ultrasonic images can be obtained through the digital video signal output and digital corrections of the imaging artefacts.

## IMPROVED INSERTABILITY

The shorter distal rigid section enables the probe to be inserted more smoothly into the upper lobe bronchus even when the endoscope is bent.

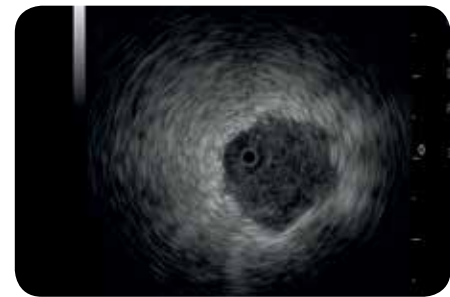
## FAST AND SIMPLE

The small and lightweight system can be used as a stand-alone solution as well as part of a larger endoscopy system.

## ULTRASONIC PROCESSOR **SP-900**



Voltage	AC100-240V
Current consumption (rated)	0.7-0.5A
Scanning mode	B mode
Scanning method	Mechanical radial
Penetration depth	20mm or more
Frequency	50 / 60Hz
Dimensions (W x H x D)	377 x 80 x 480 mm
Weight	8.0kg



## MINI PROBE **PB2020-M**



Working length	2,150 mm
Distal end diameter	1.4 mm
Proximal end diameter	1.9 mm
Acoustic frequency	20MHz ± 15%

